



MATTHEW JAMES
Property Services



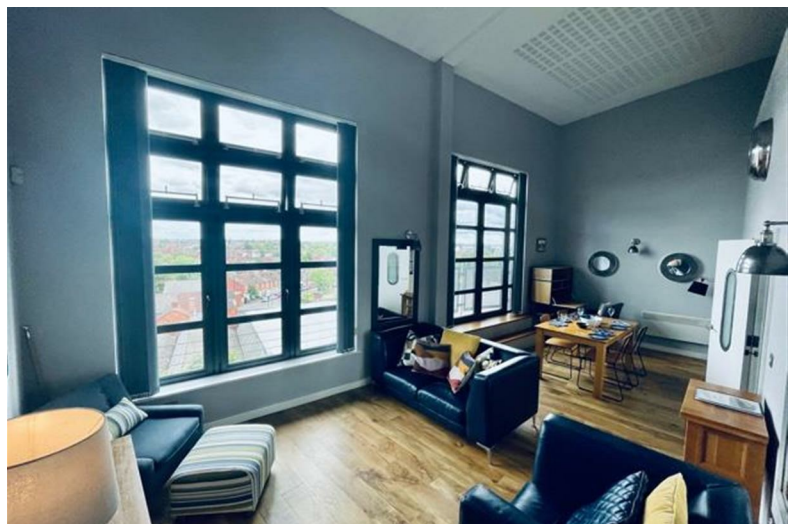
Flat 20 Bishopgate House, 21 Aldbourne Road

, Coventry, CV1 4BA

£1,600 Per Calendar Month



Flat 20 Bishopsgate House, 21 Aldbourne Road



Description

AVAILABLE MAY... PENTHOUSE DUPLEX APARTMENT... THREE DOUBLE BEDROOMS... MASTER EN-SUITE... CANAL SIDE... RECENTLY REDECORATED THROUGHOUT... Based on the third floor with lift access, being canal side and having views across Coventry, lounge dining room with cathedral ceiling, open plan master bedroom with en-suite, family bathroom, two further double bedrooms, kitchen with all integrated white goods, secure gated parking and a short walk into Coventry City Centre. Perfect location for Coventry University students or professional lets.

- Available May
- Secure Gated Car Park
- Two Bathrooms
- Lift Facility
- All Double bedrooms
- Near City Centre
- Students or Professionals
- Lounge Diner



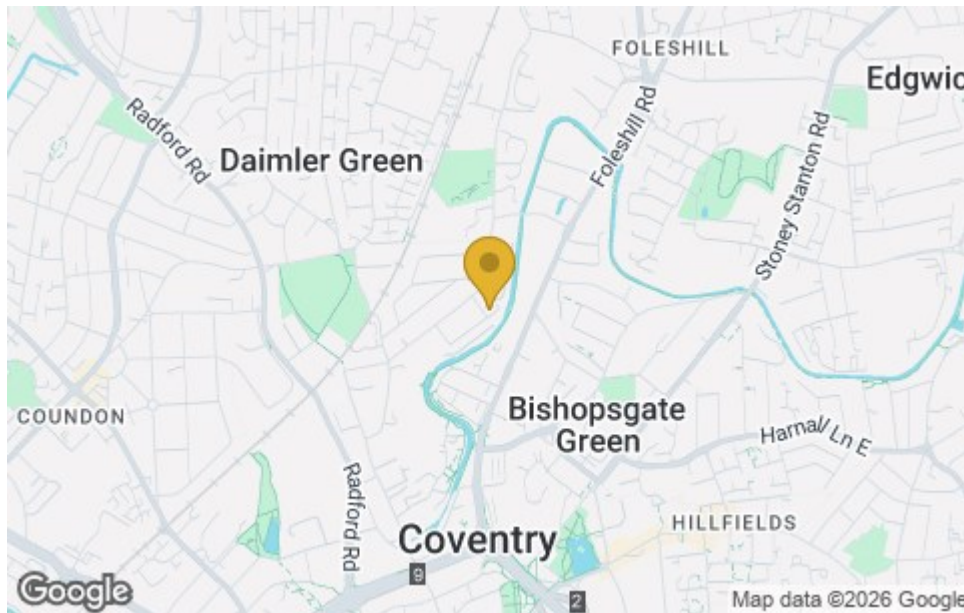


Floor Plan



Whilst every attempt has been made to ensure the accuracy of the floor plan contained here, measurements of doors, windows, rooms, and any other items are approximate and no responsibility is taken for any error, omission, or mis-statement. This plan is for illustrative purposes only and should be used as such by any prospective purchaser. The services, systems and appliances shown have not been tested and no guarantee as to their operability or efficiency can be given. Plan produced using PlanUp.

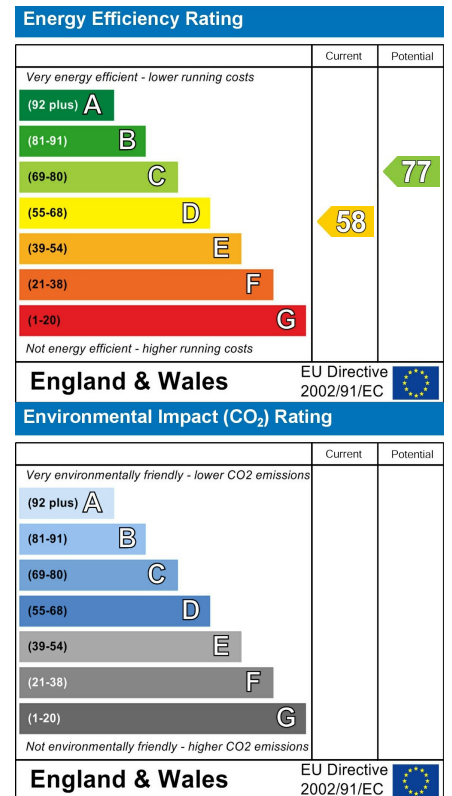
Area Map



Viewing

Please contact us on 02477 170170 if you wish to arrange a viewing appointment for this property or require further information.

Energy Efficiency Graph



These particulars, whilst believed to be accurate are set out as a general outline only for guidance and do not constitute any part of an offer or contract. Intending purchasers should not rely on them as statements of representation of fact, but must satisfy themselves by inspection or otherwise as to their accuracy. No person in this firm's employment has the authority to make or give any representation or warranty in respect of the property.

CONTACT INFORMATION

24a Warwick Row, Coventry CV1 1EY

02477 170170

info@matthewjames.uk.com

www.matthewjames.uk.com

Facebook

Twitter